

# MAIDEN CURB AND GUTTER ASSESSMENT

**CLIENT:**

Town of Maiden

**JMTE SERVICES:**

- Data Collection & Mapping Software

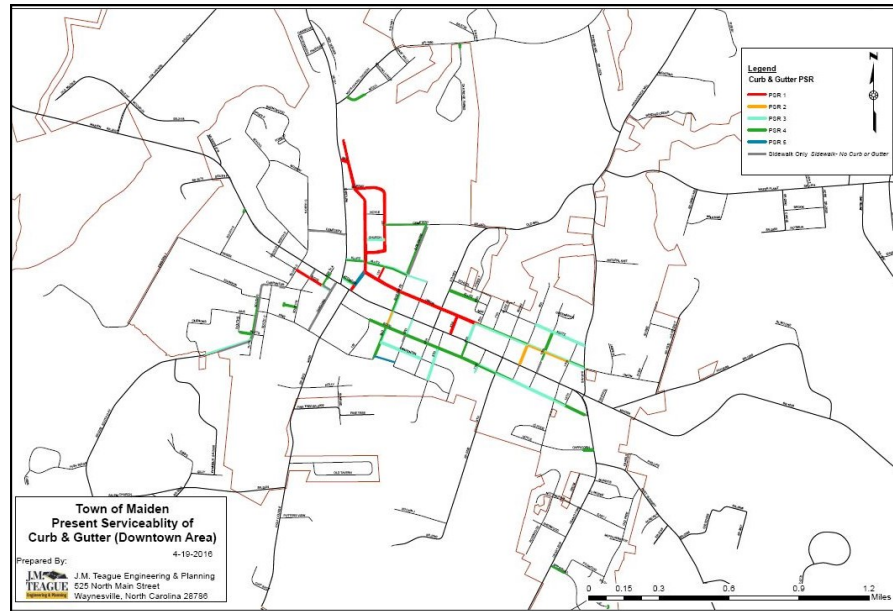
- Engineering Report

**LOCATION:**

Maiden, NC

J.M. Teague Engineering & Planning (JMTE) performed a curb and gutter survey for the Town of Maiden. The purpose of this study was to develop an additional tool for the prioritization of curb and gutter rehabilitation funds within the Town of Maiden. Segments were strategically determined based on natural street lengths, significant roadway features, and intersecting roads.

The Curb and Gutter Condition Survey was performed in a manner established by JMTE with research into other surveys performed by transportation specialists across the county. Points are collected and assigned to various segments of curb and gutter are based on observed and measured distresses in comparison to curb and gutter throughout the Town of Maiden.



**J.M. TEAGUE**  
ENGINEERING  
& PLANNING

525 North Main Street  
Waynesville, NC 28786

Phone: (828) 456-8383  
Fax: (828) 456-8797